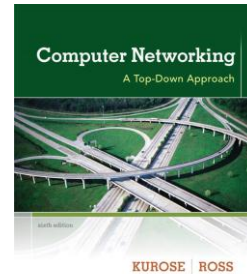


Chapter I Introduction



*Computer
Networking: A Top
Down Approach*
6th edition
Jim Kurose, Keith Ross
Addison-Wesley
March 2012

Adapted from material copyright 1996-2012
J.F. Kurose and K.W. Ross, All Rights Reserved

Introduction 1-1

Chapter I: introduction

our goal:

- ❖ get “feel” and terminology
- ❖ more depth, detail *later* in course
- ❖ approach:
 - use Internet as example

overview:

- ❖ what’s the Internet?
- ❖ what’s a protocol?
- ❖ network edge; hosts, access net, physical media
- ❖ network core: packet/circuit switching, Internet structure
- ❖ performance: loss, delay, throughput
- ❖ security
- ❖ protocol layers, service models
- ❖ history

Introduction 1-2

What's the Internet: "nuts and bolts" view



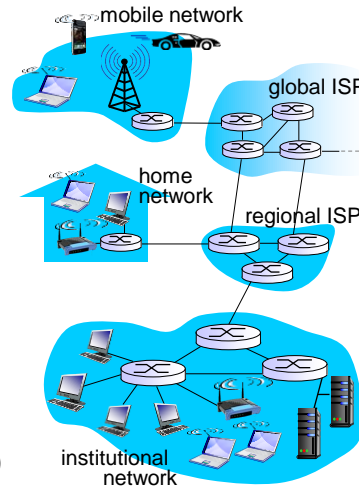
- ❖ millions of connected computing devices:
 - *hosts = end systems*
 - running *network apps*



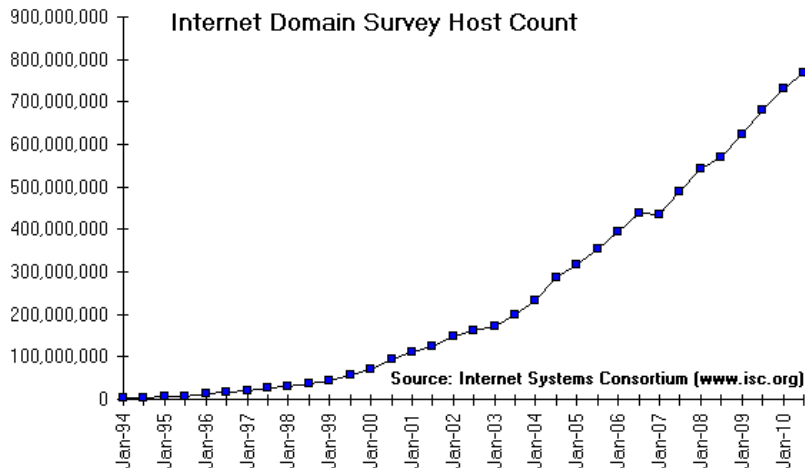
- ❖ *communication links*
 - fiber, copper, radio, satellite
 - transmission rate: *bandwidth*



- ❖ *Packet switches*: forward packets (chunks of data)
 - *routers* and *switches*



Introduction 1-3



Introduction 1-4

“Fun” internet appliances



IP picture frame
<http://www.ceiva.com/>



Web-enabled toaster +
weather forecaster



Nest thermostat



Internet
refrigerator



Slingbox: watch,
control cable TV remotely

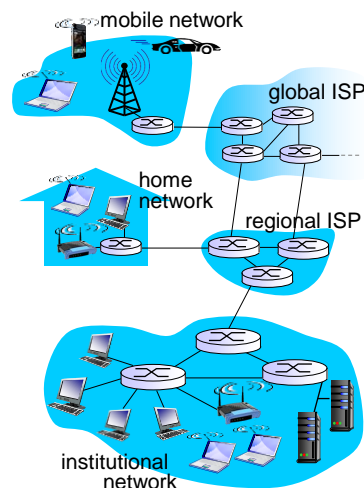


Internet phones

Introduction 1-5

What’s the Internet: “nuts and bolts” view

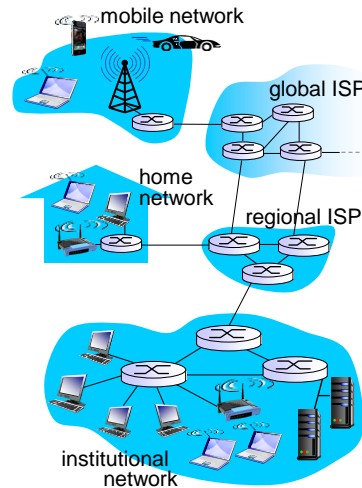
- ❖ **Internet: “network of networks”**
 - Interconnected ISPs
- ❖ **protocols** control sending, receiving of msgs
 - e.g., TCP, IP, HTTP, Skype, 802.11
- ❖ **Internet standards**
 - RFC: Request for comments
 - IETF: Internet Engineering Task Force



Introduction 1-6

What's the Internet: a service view

- ❖ *Infrastructure that provides services to applications:*
 - Web, VoIP, email, games, e-commerce, social nets, ...
- ❖ *provides programming interface to apps*
 - hooks that allow sending and receiving app programs to “connect” to Internet
 - provides service options, analogous to postal service



Introduction 1-7

What's a protocol?

human protocols:

- ❖ “what’s the time?”
- ❖ “I have a question”
- ❖ introductions

... specific msgs sent
... specific actions taken
when msgs received, or
other events

network protocols:

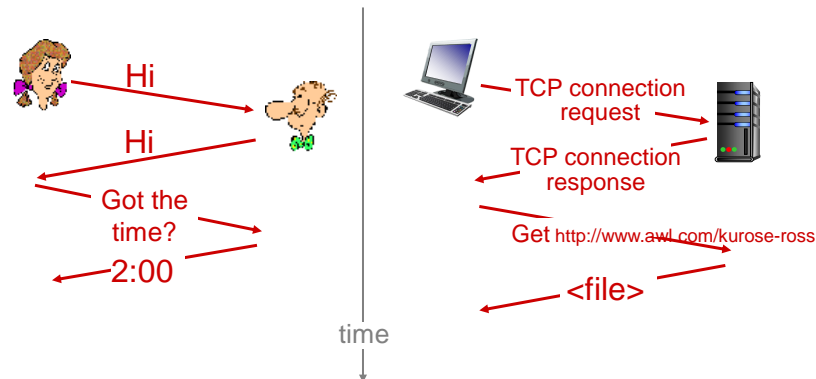
- ❖ machines rather than humans
- ❖ all communication activity in Internet governed by protocols

protocols define format, order of msgs sent and received among network entities, and actions taken on msg transmission, receipt

Introduction 1-8

What's a protocol?

a human protocol and a computer network protocol:

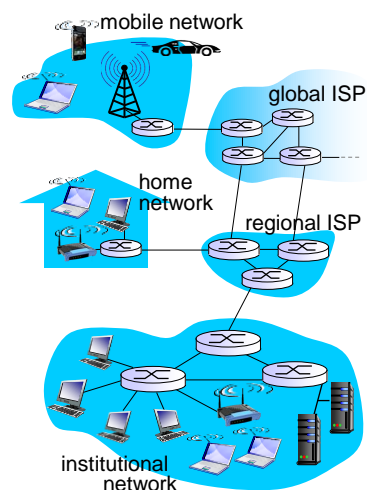


Q: other human protocols?

Introduction 1-9

A closer look at network structure:

- ❖ **network edge:**
 - hosts: clients and servers
 - servers often in data centers
- ❖ **access networks, physical media:** wired, wireless communication links
- ❖ **network core:**
 - interconnected routers
 - network of networks



Introduction 1-10

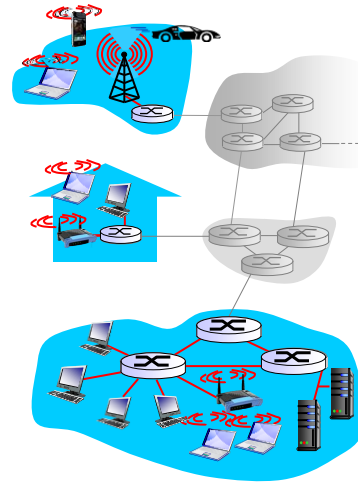
Access networks and physical media

Q: How to connect end systems to edge router?

- ❖ residential access nets
- ❖ institutional access networks (school, company)
- ❖ mobile access networks

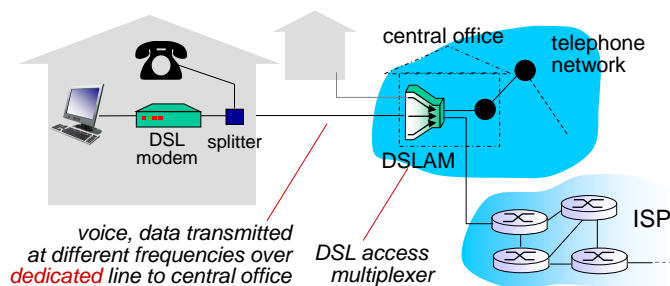
keep in mind:

- ❖ bandwidth (bits per second) of access network?
- ❖ shared or dedicated?



Introduction 1-11

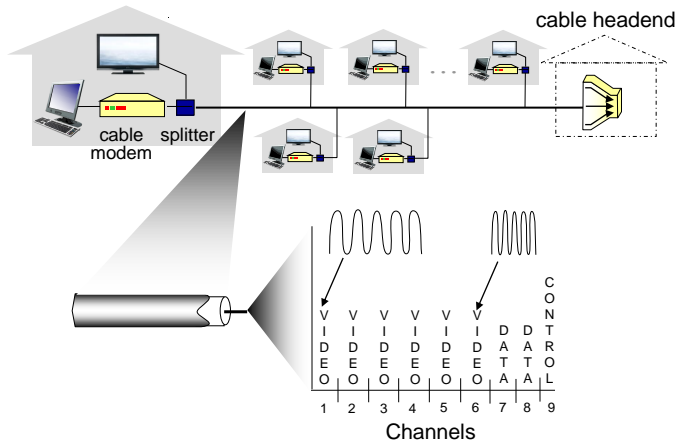
Access net: digital subscriber line (DSL)



- ❖ use *existing* telephone line to central office DSLAM
 - data over DSL phone line goes to Internet
 - voice over DSL phone line goes to telephone net
- ❖ < 2.5 Mbps upstream transmission rate (typically < 1 Mbps)
- ❖ < 24 Mbps downstream transmission rate (typically < 10 Mbps)

Introduction 1-12

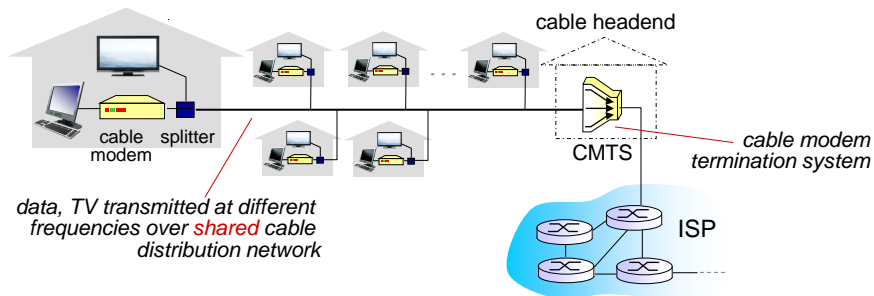
Access net: cable network



frequency division multiplexing: different channels transmitted in different frequency bands

Introduction 1-13

Access net: cable network



❖ HFC: hybrid fiber coax

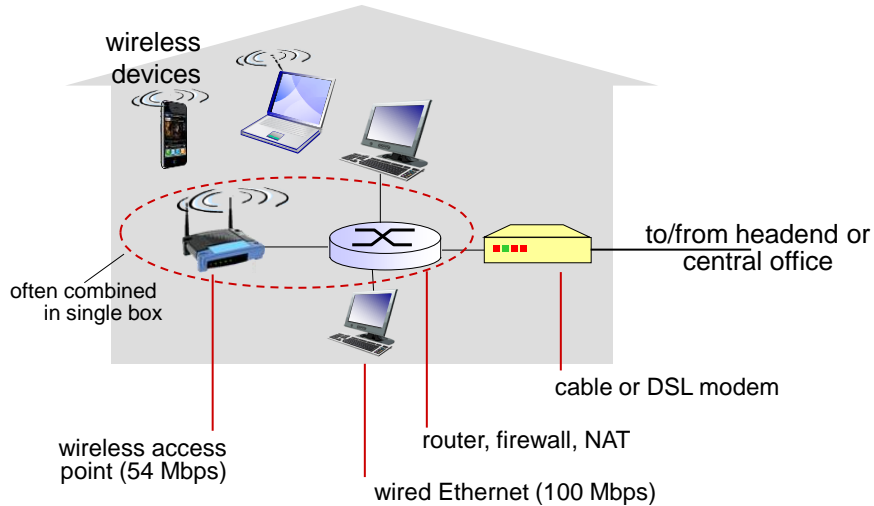
- asymmetric: up to 30Mbps downstream transmission rate, 2 Mbps upstream transmission rate

❖ network of cable, fiber attaches homes to ISP router

- homes **share access network** to cable headend
- unlike DSL, which has dedicated access to central office

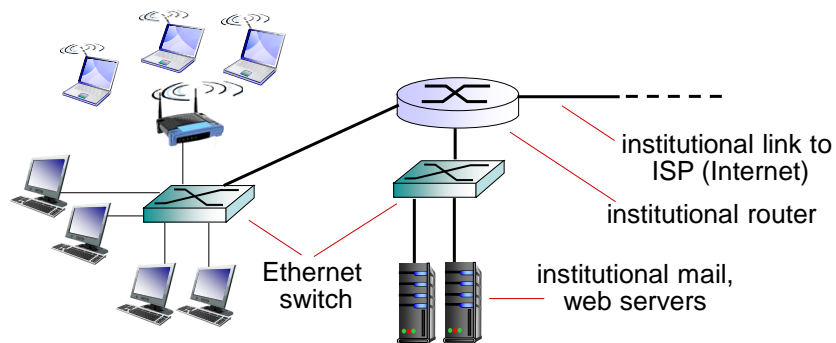
Introduction 1-14

Access net: home network



Introduction 1-15

Enterprise access networks (Ethernet)



- ❖ typically used in companies, universities, etc
- ❖ 10 Mbps, 100Mbps, 1Gbps, 10Gbps transmission rates
- ❖ today, end systems typically connect into Ethernet switch

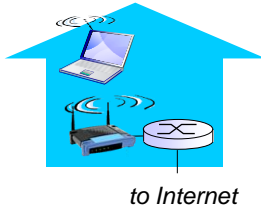
Introduction 1-16

Wireless access networks

- ❖ shared wireless access network connects end system to router
 - via base station aka “access point”

wireless LANs:

- within building (100 ft)
- 802.11b/g (WiFi): 11, 54 Mbps transmission rate



wide-area wireless access

- provided by telco (cellular) operator, 10's km
- between 1 and 10 Mbps
- 3G, 4G: LTE

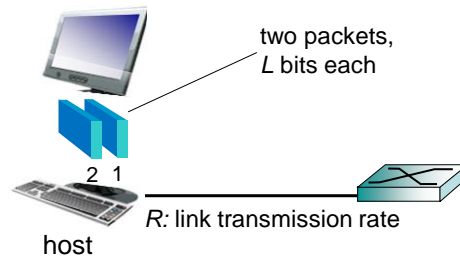


Introduction 1-17

Host: sends packets of data

host sending function:

- ❖ takes application message
- ❖ breaks into smaller chunks, known as *packets*, of length L bits
- ❖ transmits packet into access network at *transmission rate R*
 - link transmission rate, aka link *capacity*, aka *link bandwidth*



$$\text{packet transmission delay} = \text{time needed to transmit } L\text{-bit packet into link} = \frac{L \text{ (bits)}}{R \text{ (bits/sec)}}$$

1-18

Physical media

- ❖ **bit:** propagates between transmitter/receiver pairs
- ❖ **physical link:** what lies between transmitter & receiver
- ❖ **guided media:**
 - signals propagate in solid media: copper, fiber, coax
- ❖ **unguided media:**
 - signals propagate freely, e.g., radio

twisted pair (TP)

- ❖ two insulated copper wires
 - Category 5: 100 Mbps, 1 Gbps Ethernet
 - Category 6: 10Gbps



Introduction 1-19

Physical media: coax, fiber

coaxial cable:

- ❖ two concentric copper conductors
- ❖ bidirectional
- ❖ broadband:
 - multiple channels on cable
 - HFC



fiber optic cable:

- ❖ glass fiber carrying light pulses, each pulse a bit
- ❖ high-speed operation:
 - high-speed point-to-point transmission (e.g., 10⁷ s-100⁷ s Gbps transmission rate)
- ❖ low error rate:
 - repeaters spaced far apart
 - immune to electromagnetic noise



Introduction 1-20

Physical media: radio

- ❖ signal carried in electromagnetic spectrum
- ❖ no physical “wire”
- ❖ bidirectional
- ❖ propagation environment effects:
 - reflection
 - obstruction by objects
 - interference

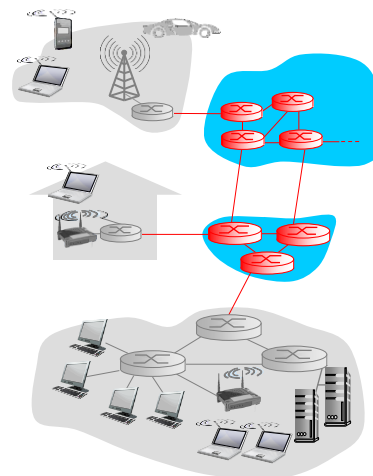
radio link types:

- ❖ **terrestrial microwave**
 - e.g. up to 45 Mbps channels
- ❖ **LAN (e.g., WiFi)**
 - 11 Mbps, 54 Mbps
- ❖ **wide-area (e.g., cellular)**
 - 3G cellular: ~ few Mbps
- ❖ **satellite**
 - Kbps to 45Mbps channel (or multiple smaller channels)
 - 270 msec end-end delay
 - geosynchronous versus low altitude

Introduction 1-21

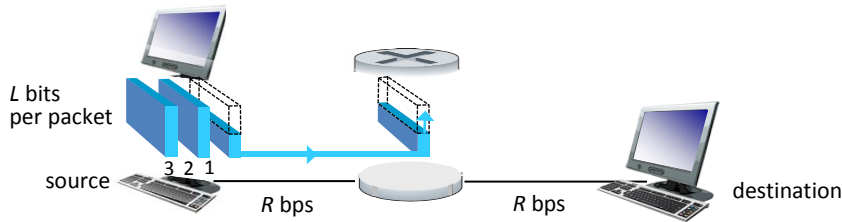
The network core

- ❖ mesh of interconnected routers
- ❖ **packet-switching: hosts break application-layer messages into packets**
 - forward packets from one router to the next, across links on path from source to destination
 - each packet transmitted at full link capacity



Introduction 1-22

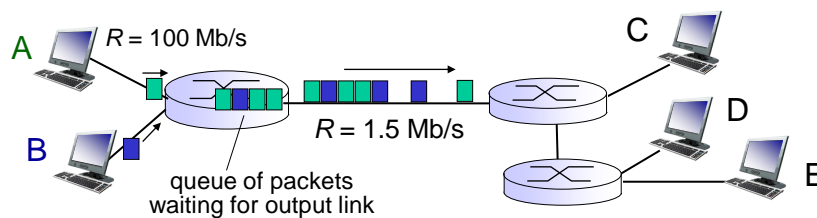
Packet-switching: store-and-forward



- ❖ takes L/R seconds to transmit (push out) L -bit packet into link at R bps
 - ❖ **store and forward**: entire packet must arrive at router before it can be transmitted on next link
 - ❖ end-end delay = $2L/R$ (assuming zero propagation delay) } more on delay shortly ...
- one-hop numerical example:*
- $L = 7.5$ Mbits
 - $R = 1.5$ Mbps
 - one-hop transmission delay = 5 sec

Introduction 1-23

Packet Switching: queueing delay, loss



queueing and loss:

- ❖ If arrival rate (in bits) to link exceeds transmission rate of link for a period of time:
 - packets will queue, wait to be transmitted on link
 - packets can be dropped (lost) if memory (buffer) fills up

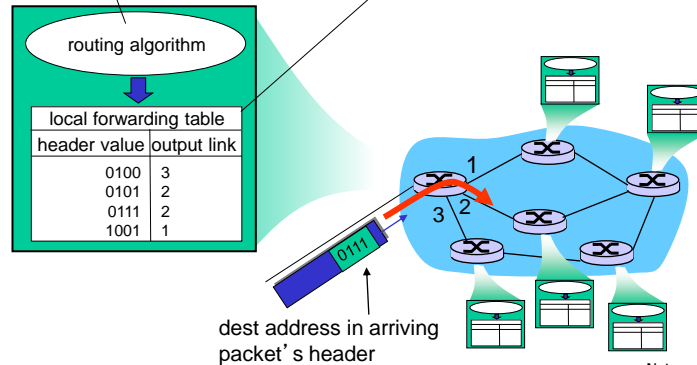
Introduction 1-24

Two key network-core functions

routing: determines source-destination route taken by packets

- *routing algorithms*

forwarding: move packets from router's input to appropriate router output

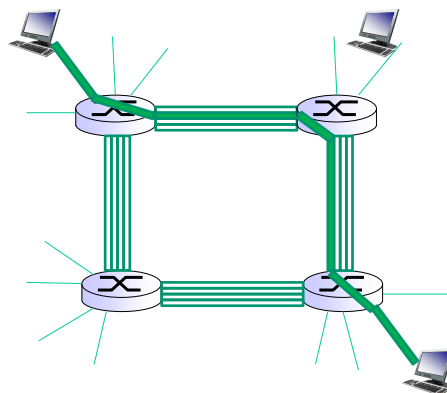


Network Layer 4-25

Alternative core: circuit switching

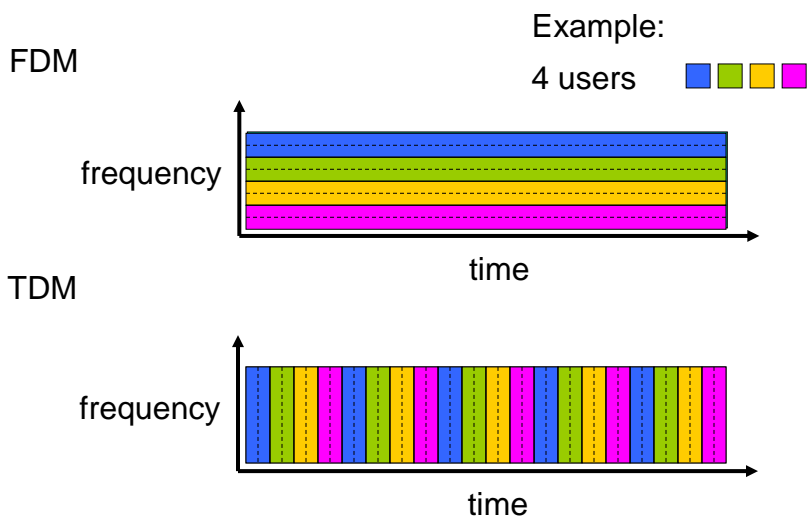
end-end resources allocated to, reserved for "call" between source & dest:

- ❖ In diagram, each link has four circuits.
 - call gets 2nd circuit in top link and 1st circuit in right link.
- ❖ dedicated resources: no sharing
 - circuit-like (guaranteed) performance
- ❖ circuit segment idle if not used by call (*no sharing*)
- ❖ Commonly used in traditional telephone networks



Introduction 1-26

Circuit switching: FDM versus TDM



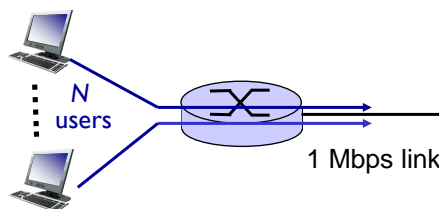
Introduction 1-27

Packet switching versus circuit switching

packet switching allows more users to use network!

example:

- 1 Mb/s link
- each user:
 - 100 kb/s when “active”
 - active 10% of time



❖ *circuit-switching:*

- 10 users

❖ *packet switching:*

- with 35 users, probability > 10 active at same time is less than .0004 *

Q: how did we get value 0.0004?

Q: what happens if > 35 users ?

* Check out the online interactive exercises for more examples

Introduction 1-28

Packet switching versus circuit switching

is packet switching a “slam dunk winner?”

- ❖ great for bursty data
 - resource sharing
 - simpler, no call setup
- ❖ **excessive congestion possible:** packet delay and loss
 - protocols needed for reliable data transfer, congestion control
- ❖ **Q: How to provide circuit-like behavior?**
 - bandwidth guarantees needed for audio/video apps
 - still an unsolved problem (chapter 7)

Q: human analogies of reserved resources (circuit switching) versus on-demand allocation (packet-switching)?

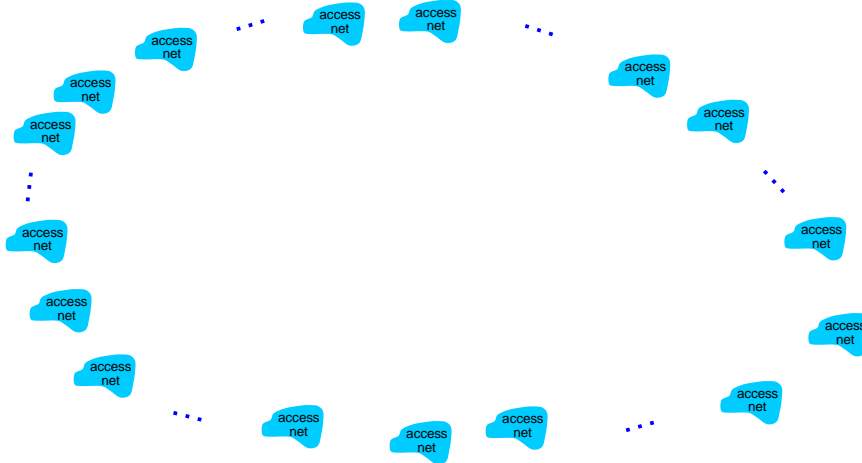
Introduction 1-29

Internet structure: network of networks

- ❖ End systems connect to Internet via **access ISPs** (Internet Service Providers)
 - Residential, company and university ISPs
- ❖ Access ISPs in turn must be interconnected.
 - ❖ So that any two hosts can send packets to each other
- ❖ Resulting network of networks is very complex
 - ❖ Evolution was driven by **economics** and **national policies**
- ❖ Let's take a stepwise approach to describe current Internet structure

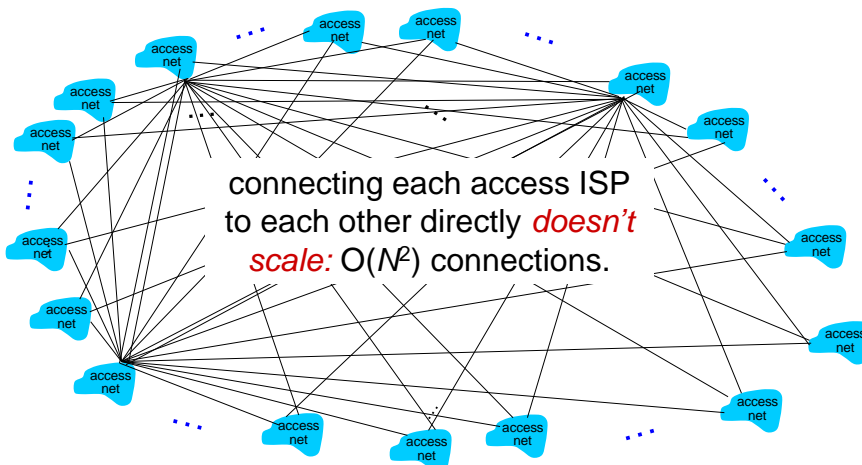
Internet structure: network of networks

Question: given millions of access ISPs, how to connect them together?



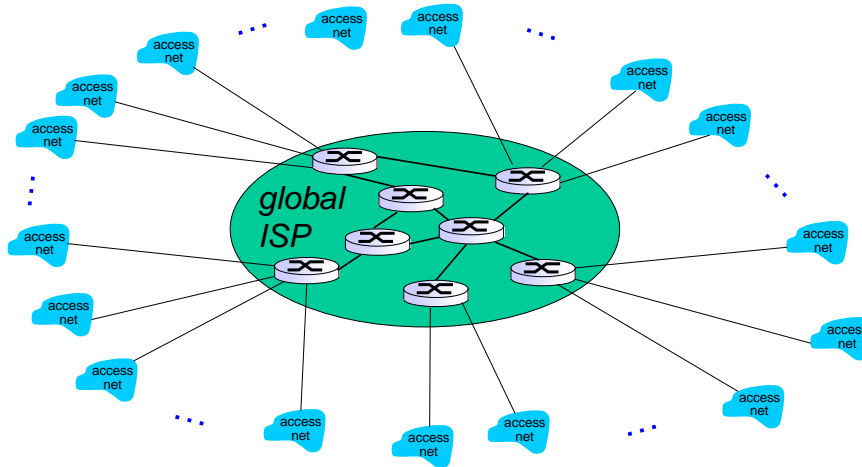
Internet structure: network of networks

Option: connect each access ISP to every other access ISP?



Internet structure: network of networks

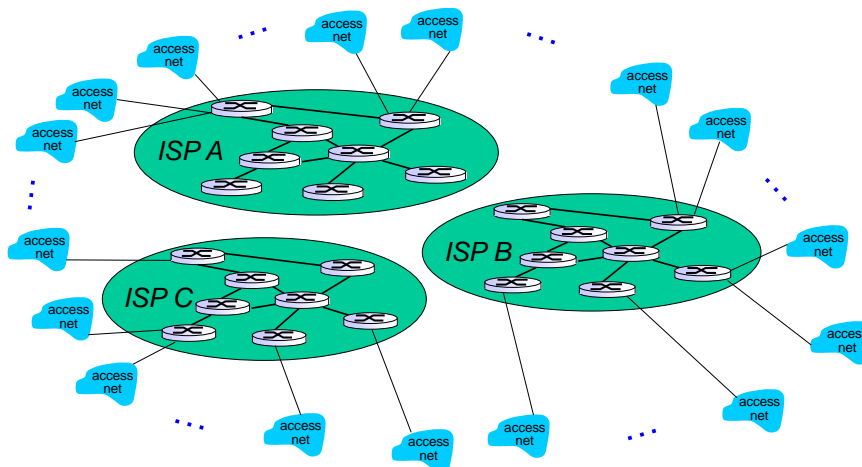
Option: connect each access ISP to a global transit ISP? Customer and provider ISPs have economic agreement.



Internet structure: network of networks

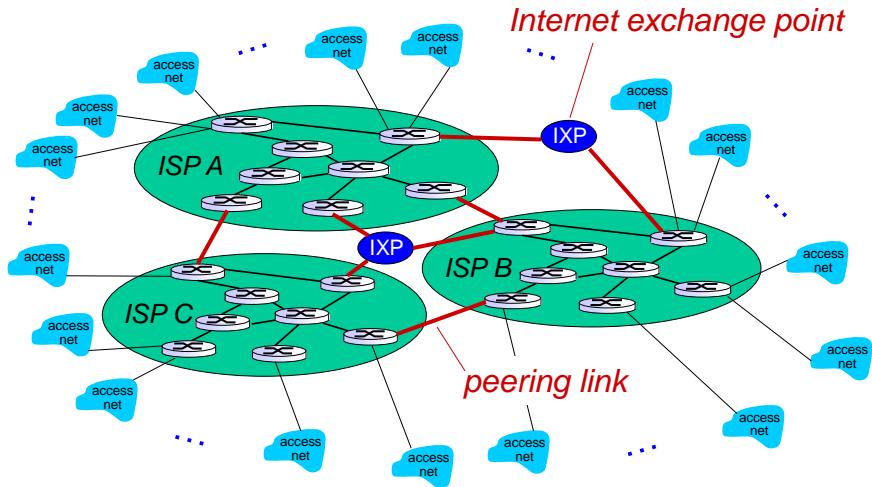
But if one global ISP is viable business, there will be competitors

....



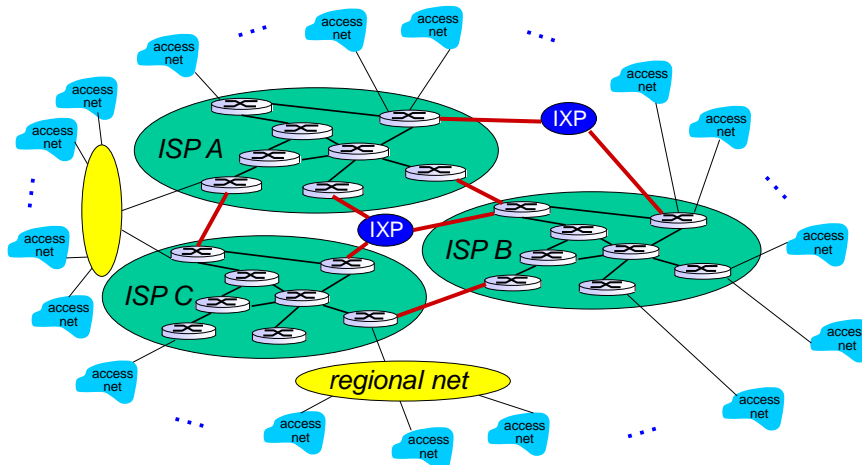
Internet structure: network of networks

But if one global ISP is viable business, there will be competitors
.... which must be interconnected



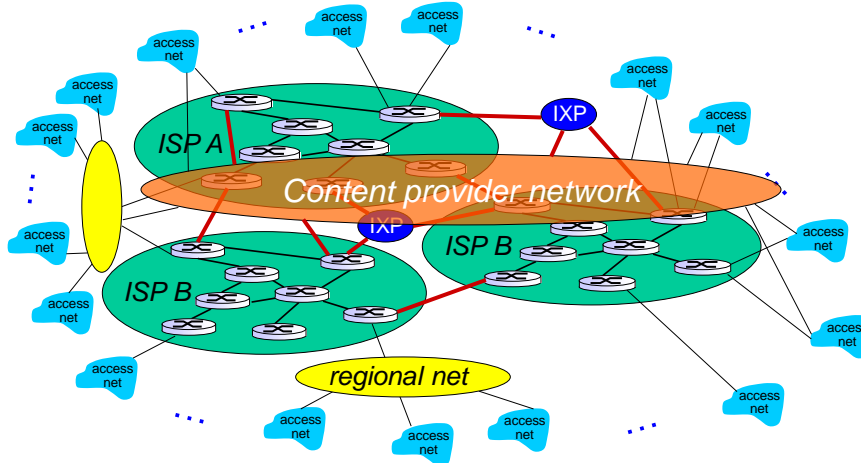
Internet structure: network of networks

... and regional networks may arise to connect access nets to ISPs

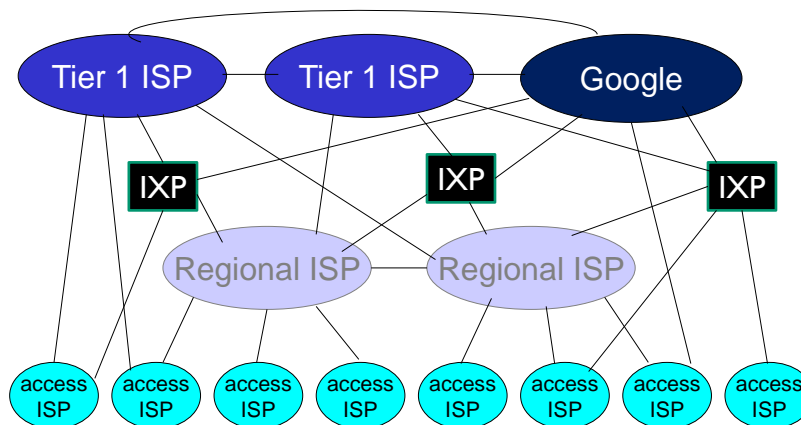


Internet structure: network of networks

... and content provider networks (e.g., Google, Microsoft, Akamai) may run their own network, to bring services, content close to end users



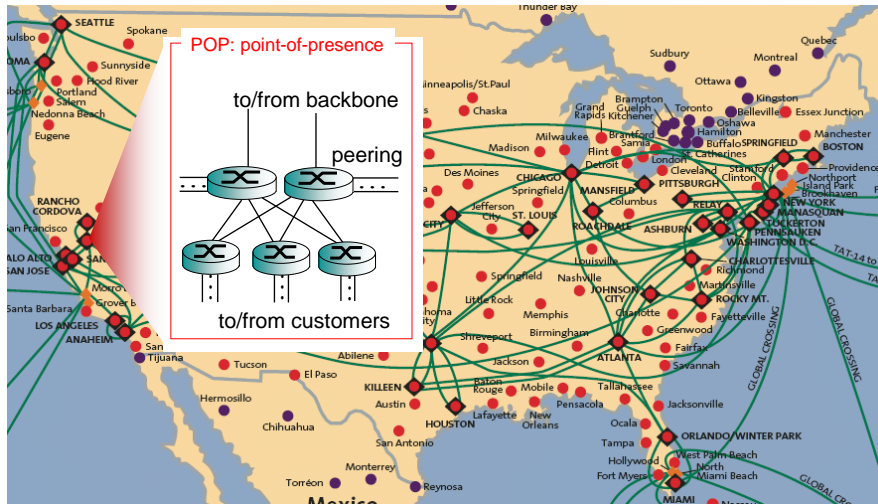
Internet structure: network of networks



- ❖ at center: small # of well-connected large networks
 - “tier-1” commercial ISPs (e.g., Level 3, Sprint, AT&T, NTT), national & international coverage
 - content provider network (e.g., Google): private network that connects it data centers to Internet, often bypassing tier-1, regional ISPs

Introduction 1-38

Tier-I ISP: e.g., Sprint

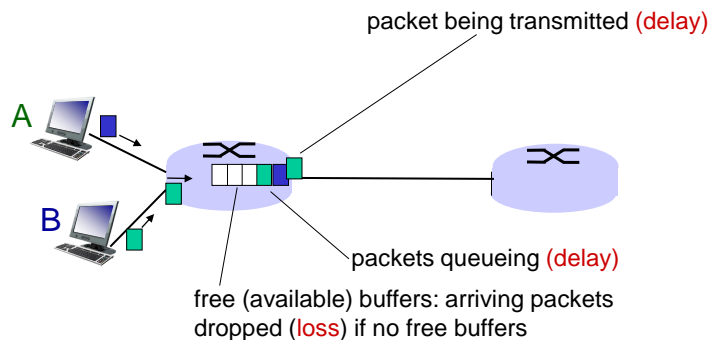


Introduction 1-39

How do loss and delay occur?

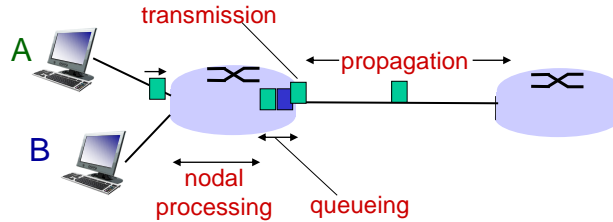
packets *queue* in router buffers

- ❖ packet arrival rate to link (temporarily) exceeds output link capacity
- ❖ packets queue, wait for turn



Introduction 1-40

Four sources of packet delay



$$d_{\text{nodal}} = d_{\text{proc}} + d_{\text{queue}} + d_{\text{trans}} + d_{\text{prop}}$$

d_{proc} : nodal processing

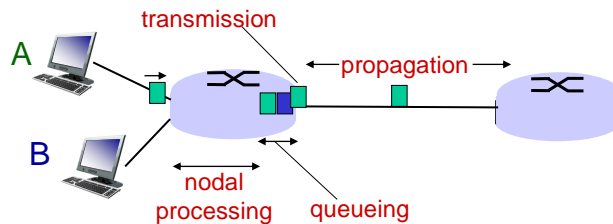
- check bit errors
- determine output link
- typically < msec

d_{queue} : queueing delay

- time waiting at output link for transmission
- depends on congestion level of router

Introduction 1-41

Four sources of packet delay



$$d_{\text{nodal}} = d_{\text{proc}} + d_{\text{queue}} + d_{\text{trans}} + d_{\text{prop}}$$

d_{trans} : transmission delay:

- L : packet length (bits)
- R : link bandwidth (bps)
- $d_{\text{trans}} = L/R$

d_{prop} : propagation delay:

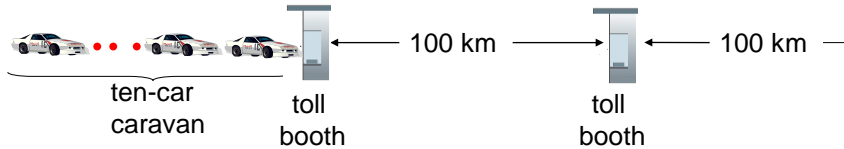
- d : length of physical link
- s : propagation speed in medium ($\sim 2 \times 10^8$ m/sec)
- $d_{\text{prop}} = d/s$

d_{trans} and d_{prop}
very different

* Check out the Java applet for an interactive animation on trans vs. prop delay

Introduction 1-42

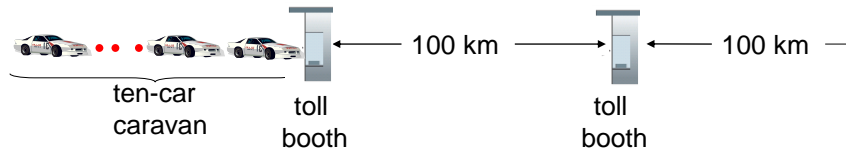
Caravan analogy



- ❖ cars “propagate” at 100 km/hr
- ❖ toll booth takes 12 sec to service car (bit transmission time)
- ❖ car~bit; caravan ~ packet
- ❖ **Q: How long until caravan is lined up before 2nd toll booth?**
 - time to “push” entire caravan through toll booth onto highway = $12 \times 10 = 120$ sec
 - time for last car to propagate from 1st to 2nd toll booth: $100 \text{ km} / (100 \text{ km/hr}) = 1$ hr
 - **A: 62 minutes**

Introduction 1-43

Caravan analogy (more)

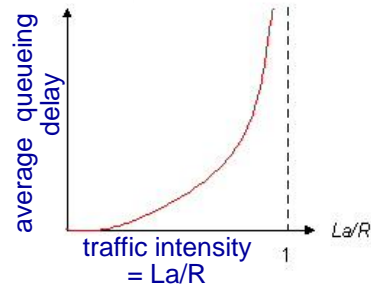


- ❖ suppose cars now “propagate” at 1000 km/hr
- ❖ and suppose toll booth now takes one min to service a car
- ❖ **Q: Will cars arrive to 2nd booth before all cars serviced at first booth?**
 - **A: Yes!** after 7 min, 1st car arrives at second booth; three cars still at 1st booth.

Introduction 1-44

Queueing delay (revisited)

- ❖ R : link bandwidth (bps)
- ❖ L : packet length (bits)
- ❖ a : average packet arrival rate



- ❖ $La/R \sim 0$: avg. queueing delay small
- ❖ $La/R \rightarrow 1$: avg. queueing delay large
- ❖ $La/R > 1$: more “work” arriving than can be serviced, average delay infinite!

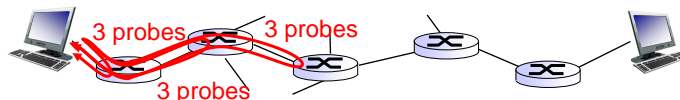


* Check out the Java applet for an interactive animation on queueing and loss

La/R -> 1
Introduction 1-45

“Real” Internet delays and routes

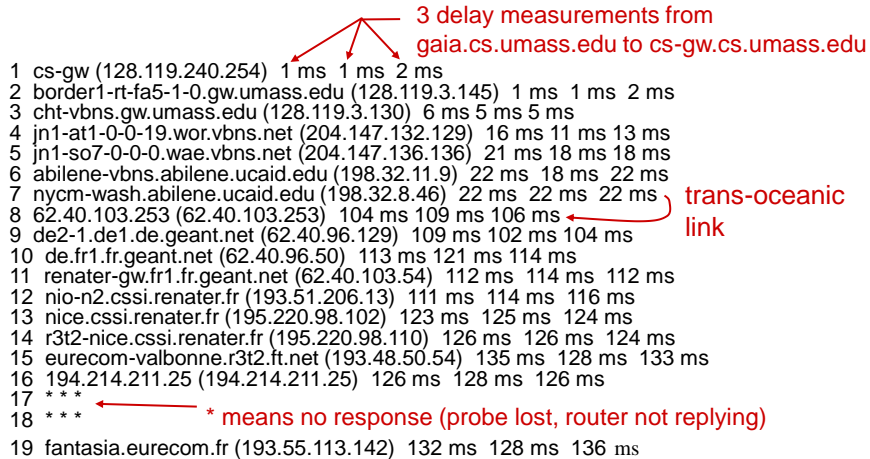
- ❖ what do “real” Internet delay & loss look like?
- ❖ `traceroute` program: provides delay measurement from source to router along end-end Internet path towards destination. For all i :
 - sends three packets that will reach router i on path towards destination
 - Packets have a “Time To Live” option that is incremented
 - Uses expanding ring search
 - router i will return packets to sender
 - sender times interval between transmission and reply.



Introduction 1-46

“Real” Internet delays, routes

traceroute: gaia.cs.umass.edu to www.eurecom.fr



* Do some traceroutes from exotic countries at www.traceroute.org

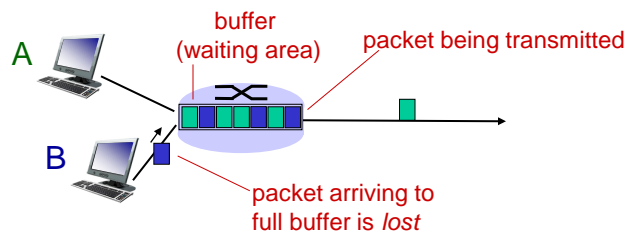
Introduction 1-47

Protocols in Traceroute

- ❖ What protocols were involved?
 - At a high level...
 - Traceroute : The app sent data with increasing TTL fields. There must be some receiver program that will report back “Your packet died here”

Packet loss

- ❖ queue (aka buffer) preceding link in buffer has finite capacity
- ❖ packet arriving to full queue dropped (aka lost)
- ❖ lost packet may be retransmitted by previous node, by source end system, or not at all

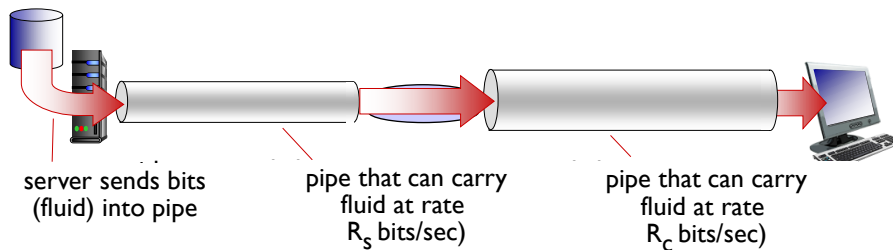


* Check out the Java applet for an interactive animation on queuing and loss

Introduction 1-49

Throughput

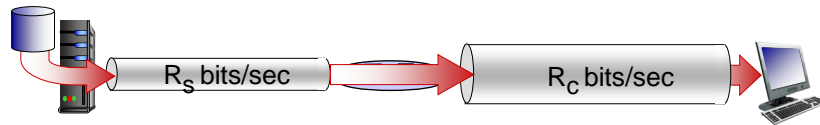
- ❖ **throughput**: rate (bits/time unit) at which bits transferred between sender/receiver
 - **instantaneous**: rate at given point in time
 - **average**: rate over longer period of time



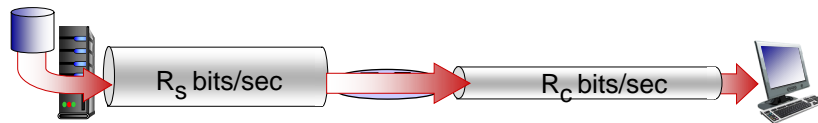
Introduction 1-50

Throughput (more)

- ❖ $R_s < R_c$ What is average end-end throughput?



- ❖ $R_s > R_c$ What is average end-end throughput?



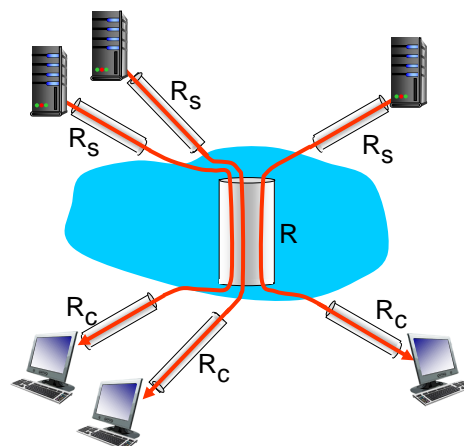
bottleneck link

link on end-end path that constrains end-end throughput

Introduction 1-51

Throughput: Internet scenario

- ❖ per-connection end-end throughput: $\min(R_c, R_s, R/10)$
- ❖ in practice: R_c or R_s is often bottleneck



10 connections (fairly) share backbone bottleneck link R bits/sec

Introduction 1-52

Protocol “layers”

*Networks are complex,
with many “pieces”:*

- hosts
- routers
- links of various media
- applications
- protocols
- hardware, software

Question:

is there any hope of
organizing structure of
network?

.... or at least our
discussion of networks?

Introduction 1-53

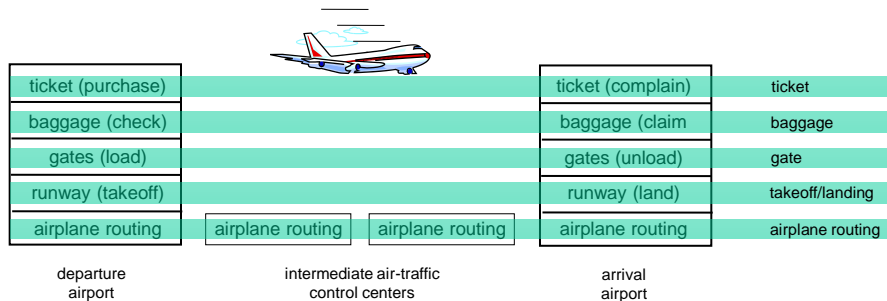
Organization of air travel



❖ a series of steps

Introduction 1-54

Layering of airline functionality



layers: each layer implements a service

- via its own internal-layer actions
- relying on services provided by layer below

Introduction 1-55

Why layering?

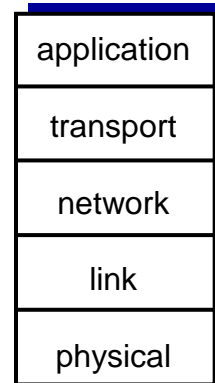
dealing with complex systems:

- ❖ explicit structure allows identification, relationship of complex system's pieces
 - layered *reference model* for discussion
- ❖ modularization eases maintenance, updating of system
 - change of implementation of layer's service transparent to rest of system
 - e.g., change in gate procedure doesn't affect rest of system
- ❖ layering considered harmful?

Introduction 1-56

Internet protocol stack

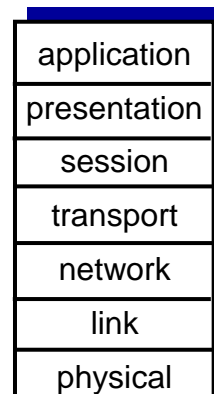
- ❖ **application:** supporting network applications
 - FTP, SMTP, HTTP
- ❖ **transport:** process-process data transfer
 - TCP, UDP
- ❖ **network:** routing of datagrams from source to destination
 - IP, routing protocols
- ❖ **link:** data transfer between neighboring network elements
 - Ethernet, 802.111 (WiFi), PPP
- ❖ **physical:** bits “on the wire”



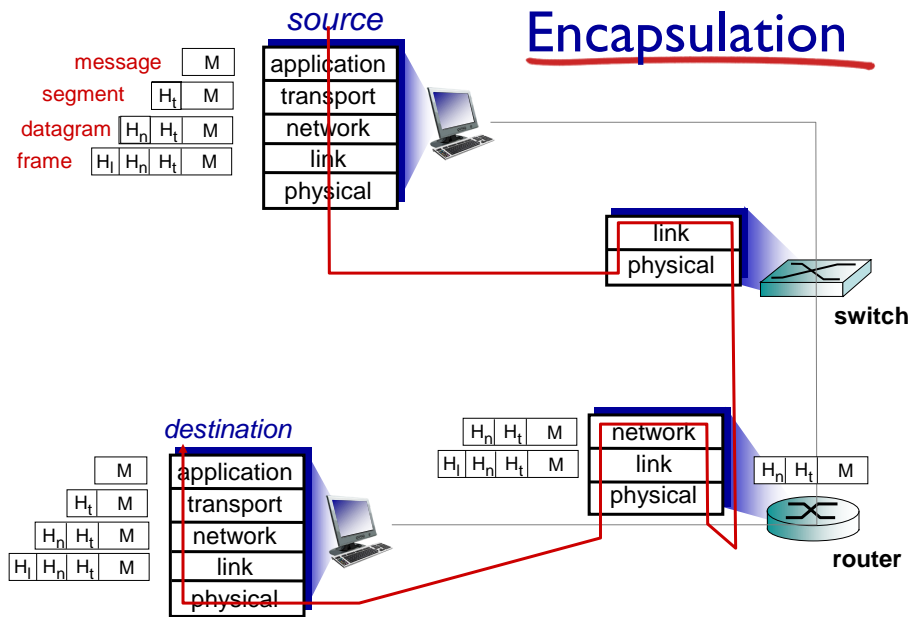
Introduction 1-57

ISO/OSI reference model

- ❖ **presentation:** allow applications to interpret meaning of data, e.g., encryption, compression, machine-specific conventions
- ❖ **session:** synchronization, checkpointing, recovery of data exchange
- ❖ Internet stack “missing” these layers!
 - these services, *if needed*, must be implemented in application
 - needed?



Introduction 1-58



Introduction 1-59

Network security

- ❖ **field of network security:**
 - how bad guys can attack computer networks
 - how we can defend networks against attacks
 - how to design architectures that are immune to attacks
- ❖ **Internet not originally designed with (much) security in mind**
 - *original vision:* “a group of mutually trusting users attached to a transparent network” 😊
 - Internet protocol designers playing “catch-up”
 - security considerations in all layers!

Introduction 1-60

Bad guys: put malware into hosts via Internet

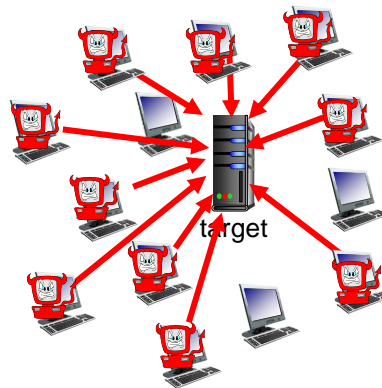
- ❖ malware can get in host from:
 - *virus*: self-replicating infection by receiving/executing object (e.g., e-mail attachment)
 - *worm*: self-replicating infection by passively receiving object that gets itself executed
- ❖ **spyware malware** can record keystrokes, web sites visited, upload info to collection site
- ❖ infected host can be enrolled in **botnet**, used for spam. DDoS attacks

Introduction 1-61

Bad guys: attack server, network infrastructure

Denial of Service (DoS): attackers make resources (server, bandwidth) unavailable to legitimate traffic by overwhelming resource with bogus traffic

1. select target
2. break into hosts around the network (see botnet)
3. send packets to target from compromised hosts

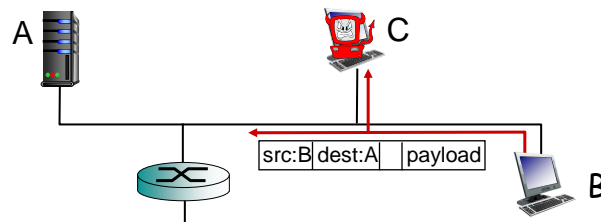


Introduction 1-62

Bad guys can sniff packets

packet “sniffing”:

- broadcast media (shared ethernet, wireless)
- promiscuous network interface reads/records all packets (e.g., including passwords!) passing by

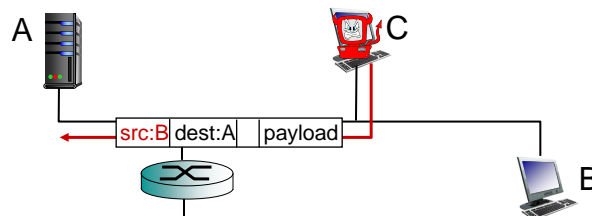


- ❖ wireshark software used for end-of-chapter labs is a (free) packet-sniffer

Introduction 1-63

Bad guys can use fake addresses

IP spoofing: send packet with false source address



... lots more on security (throughout, Chapter 8)

Introduction 1-64

Internet history

1961-1972: Early packet-switching principles

- ❖ 1961: Kleinrock - queueing theory shows effectiveness of packet-switching
- ❖ 1964: Baran - packet-switching in military nets
- ❖ 1967: ARPAnet conceived by Advanced Research Projects Agency
- ❖ 1969: first ARPAnet node operational
- ❖ 1972:
 - ARPAnet public demo
 - NCP (Network Control Protocol) first host-host protocol
 - first e-mail program
 - ARPAnet has 15 nodes

Introduction 1-65

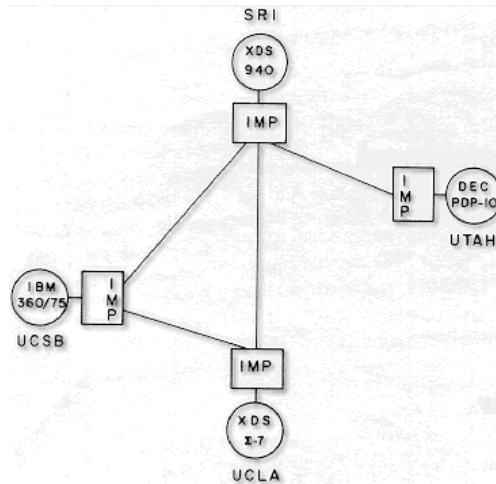
ARPAnet in 1969

- Early computers were *expensive*
- Large footprint , Centralized
- Programs took a long time to run
- Couldn't afford to put computers everywhere

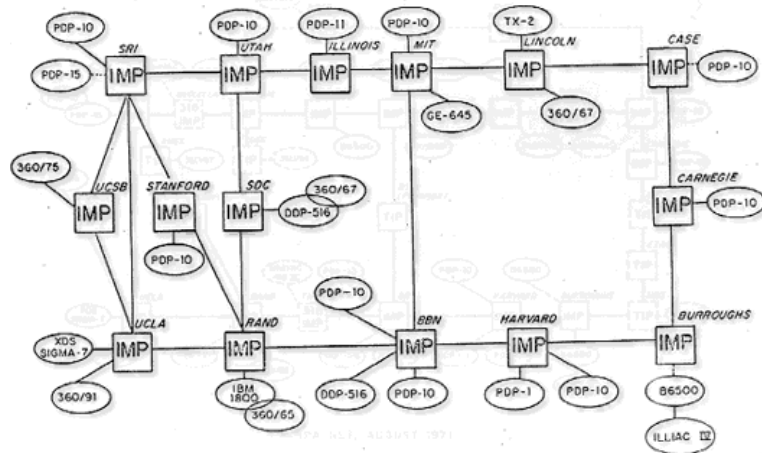
- Distributed communication system
- Enable research communication
- Enable dissimilar computers to share information
- Reroute information automatically
- Act as a network of networks; internetworking

Originally just 4 sites!

Original ARPANet Sites



ARPANet in 1972



Internet history

1972-1980: Internetworking, new and proprietary nets

- ❖ 1970: ALOHAnet satellite network in Hawaii
- ❖ 1974: Cerf and Kahn - architecture for interconnecting networks
- ❖ 1976: Ethernet at Xerox PARC
- ❖ late70' s: proprietary architectures: DECnet, SNA, XNA
- ❖ late 70' s: switching fixed length packets (ATM precursor)
- ❖ 1979: ARPAnet has 200 nodes
- ❖ 1979: Usenet via modem

Cerf and Kahn' s internetworking principles:

- minimalism, autonomy - no internal changes required to interconnect networks
- best effort service model
- stateless routers
- decentralized control

define today' s Internet architecture

Introduction 1-69

Internet history

1980-1990: new protocols, a proliferation of networks

- ❖ 1983: deployment of TCP/IP
- ❖ 1982: smtp e-mail protocol defined
- ❖ 1983: DNS defined for name-to-IP-address translation
- ❖ 1985: ftp protocol defined
- ❖ 1988: TCP congestion control
- ❖ 1988: Morris worm
- ❖ new national networks: Csnnet, BITnet, NSFnet, Minitel
- ❖ 100,000 hosts connected to confederation of networks

Introduction 1-70

Internet history

1990, 2000 's: commercialization, the Web, new apps

- ❖ early 1990' s: ARPAnet decommissioned
- ❖ 1991: NSF lifts restrictions on commercial use of NSFnet (decommissioned, 1995)
- ❖ early 1990s: Web
 - hypertext [Bush 1945, Nelson 1960' s]
 - HTML, HTTP: Berners-Lee
 - 1994: Mosaic, later Netscape
 - late 1990' s: commercialization of the Web
- late 1990' s – 2000' s:
 - ❖ more killer apps: instant messaging, P2P file sharing
 - ❖ network security to forefront
 - ❖ est. 50 million host, 100 million+ users
 - ❖ backbone links running at Gbps

Introduction 1-71

Internet history

2005-present

- ❖ ~750 million hosts
 - Smartphones and tablets
- ❖ Aggressive deployment of broadband access
- ❖ Increasing ubiquity of high-speed wireless access
- ❖ Emergence of online social networks:
 - Facebook: soon one billion users
- ❖ Service providers (Google, Microsoft) create their own networks
 - Bypass Internet, providing “instantaneous” access to search, email, etc.
- ❖ E-commerce, universities, enterprises running their services in “cloud” (eg, Amazon EC2)

Introduction 1-72

Introduction: summary

covered a “ton” of material!

- ❖ Internet overview
- ❖ what’s a protocol?
- ❖ network edge, core, access network
 - packet-switching versus circuit-switching
 - Internet structure
- ❖ performance: loss, delay, throughput
- ❖ layering, service models
- ❖ security
- ❖ history

you now have:

- ❖ context, overview, “feel” of networking
- ❖ more depth, detail to follow!

Introduction 1-73